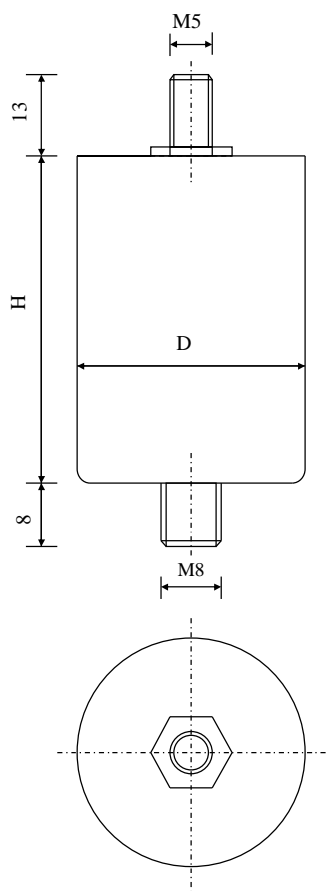


#6447

METALLIZED POLYPROPYLENE CAPACITORS

PAM 90-047 cv4 K



Dielectric of metallized polypropylene

Threaded outputs

Resin end sealing

Parameter	Symbol	Value	Unit	Condition
Capacitance	C	0.47	μF	1 V / 1 kHz
Tolerance		± 10	%	
RMS voltage	U R	900	VAC	
Peak voltage	U _p	1100	V	
Surge voltage	U _s	1500	V	
Repetitive current	I cr.	120	A	
Surge current	I s	300	A	
RMS current	I RMS	10	A	F \geq 50 kHz
Tangent delta	tg δ	≤ 4	10^{-4}	1 V / 1 kHz
Equivalent serie resistance	ESR	≤ 19	m Ω	10 kHz
Stray inductance	ESL	≤ 70	nH	
Insulation resistance between terminals	R _i	$\geq 20\,000$	M Ω	500 V / 1 min
Test voltage between terminals	U T	1150	VAC	50 Hz / 10 sec.
Ambiant temperature		- 55 ... + 85	$^{\circ}\text{C}$	

Dimension	Symbol	Value	Unit	Conditions
Diameter	D	25	mm	
Height	H	57 \pm 1	mm	
Terminals				
Thread (maximal torque 2.5 Nm)		M5	mm	
fixing stud (maximal torque 4.0 Nm)		M8 x 8	mm	
	M1			
	M0	15.10.2015	HJJ	
	Modification	Date	Visa émetteur	

Condensateurs CH 1400 Yverdon, Switzerland
 Kondensatoren Tel.: ++41 24 445 66 88
 Capacitors Fax: ++41 24 445 66 89

Leclanché
Capacitors
A FISCHER & TAUSSCHÉ COMPANY

HJJ

www.Lcap.ch
 09.10.2015

capinfo@Lcap.ch
 faisab6447.XLS