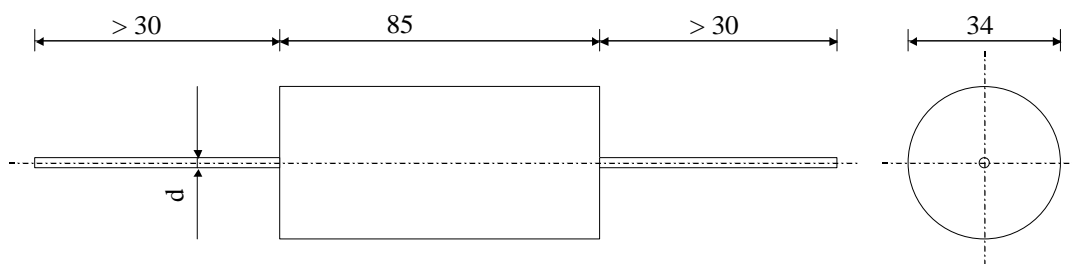


#5567

METALLIZED POLYPROPYLENE CAPACITORS

PPM 500-025 d K



Dielectric of metallized polypropylene

Plastic sleeve / Epoxy resin sealing

| Parameter | Symbol | | Value | Unit | Condition |
|----------------------------------|--------------|------|-----------------|--------------------|-----------------|
| Capacitance | C | | 0.25 | μF | 1 V / 1 kHz |
| Tolerance | | | ± 10 | % | |
| Rated voltage | Un DC | | 5000 | VDC | |
| Rated voltage | Un AC | | 1250 | Veff | 50 Hz to 1 kHz |
| RMS Current | Ieff | | 6 | Aeff | 10 kHz |
| slope of voltage variation | du/dt max. | | 1200 | V/ μsec | max. repetitive |
| Repetitive surge current | I cr. max | | 300 | A | |
| Tangente delta | tg δ | | 3 | 10^{-4} | 1 V / 1 kHz |
| Tangente delta | tg δ | | 7.5 | 10^{-4} | 1 V / 10 kHz |
| Stray inductance | ESL | | ≤ 80 | nH | |
| Insulation resistance | Ri | | $> 50'00$ | M Ω | 100 VDC - 1 min |
| Test voltage between terminals | U T1 | | $10'000$ | VDC | 10 s |
| Operating temp. | | | - 40 / + 85 °C | | |
| Estimated operational life (-3%) | | | 100000 | h | Un DC - 70°C |
| | | | | | |
| | | | | | |
| Dimension | Symbol | | | Unit | Conditions |
| Diameter | \emptyset | | 34 | mm | |
| Height | H | | 85 | mm | |
| Terminals | | | | | |
| Axial tinned wire | | | $\emptyset 0.8$ | mm | |
| | | | | | |
| | | | | | |
| | M1 | | | | |
| | M0 | | | | |
| | Modification | Date | Visa émetteur | | |

Condensateurs

CH 1401 Yverdon-les-Bains

Kondensatoren

Tel.: ++41 24 445 66 88

Capacitors

Fax: ++41 24 445 66 89

Le lanché
Capacitors
A FISCHER & TALSCHER COMPANY

HJJ

22.05.2006

faisab5567.XLS