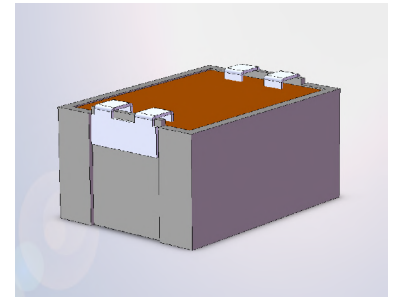
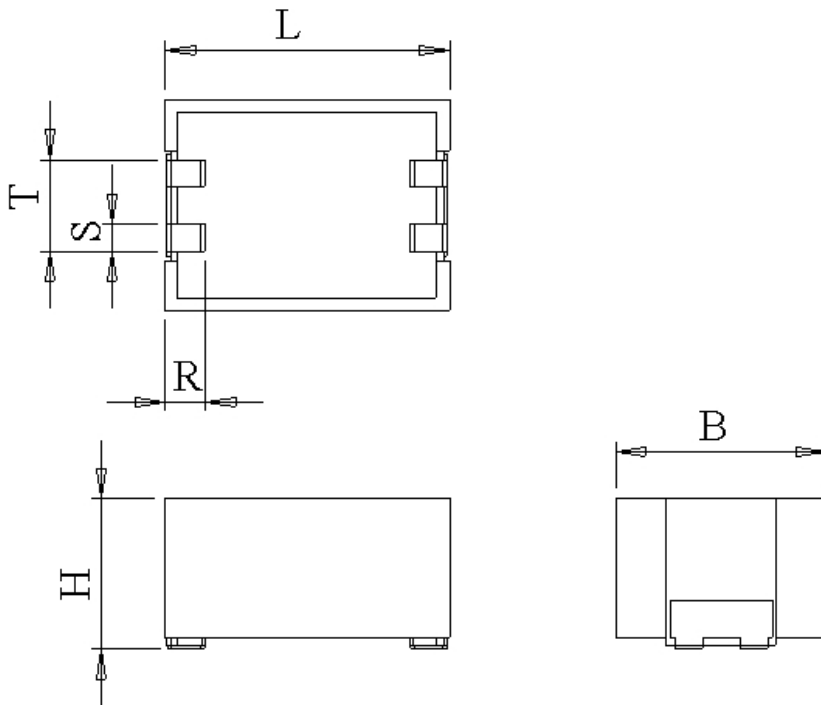


#7001

Power Electronics Capacitors

MKT 6-22.0 SMD2 K



Surface mount device - Self-extinguishing plastic housing  
Dielectric metallized polyester - Epoxy resin sealing UL 94-V0

Parameter	Symbol		Value	Unit	Condition
Capacitance	C		22	$\mu\text{F}$	1 V / 1 kHz
Tolerance			$\pm 10$	%	
Rated voltage	Un DC		63	VDC	
RMS current	I RMS max.		8.5	Aeff	150 kHz / 105 °C
Tangent delta	tg $\delta$		$\leq 100$	$10^{-4}$	1 kHz
Equivalent serie resistance	ESR		$\leq 9.0$	m $\Omega$	100 kHz
Stray inductance	ESL		$\leq 8$	nH	
Insulation resistance	Ri		$> 57$	M $\Omega$	63 VDC - 1 min
Test voltage between terminals	U T1		101	VDC	10 s
Climatic category			55/125/21		
Dimension	Symbol			Unit	Conditions
Width	B max		17	mm	
Height	H max		15	mm	
Length	L max		18.5	mm	
Terminals					
	R		$2.25 \pm 0.25$	mm	
	S		$2.0 \pm 0.2$	mm	
	T		$7.0 \pm 0.2$	mm	
	M1				
	M0				
	Modification	Date	Visa émetteur		

Condensateurs CH 1400 Yverdon-les-Bains  
Kondensatoren Tel.: ++41 24 445 66 88  
Capacitors Fax: ++41 24 445 66 89

**Leclanché**  
Capacitors  
A FISCHER & TAUSSIG COMPANY

HJJ

07.05.2012

faisab7001.XLS