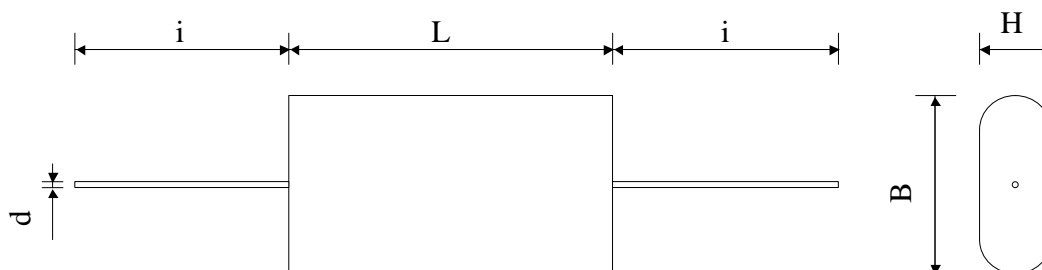


#5624

METALLIZED POLYPROYLLENE CAPACITORS

PPM 80-6.0 df K



Dielectric of metallized polypropylene

Plastic sleeve / Epoxy resin sealing

Parameter	Symbol		Value	Unit	Condition
Capacitance	C		6	μF	1 V / 1 kHz
Tolerance			± 10	%	
Rated voltage	Un DC		800	VDC	
Rated voltage	Un AC		230	Veff	
RMS current	I RMS max.		19	Aeff	10 kHz
slope of voltage variation	du/dt max.		80	V/ μsec	max. repetitive
Repetitive surge current	I cr. max		480	A	
Tangente delta	tg δ		≤ 4	10^{-4}	1 V / 1 kHz
Tangente delta	tg δ		≤ 14	10^{-4}	1 V / 10 kHz
Stray inductance	ESL		≤ 40	nH	
Insulation resistance	Ri		$> 3'330$	M Ω	100 VDC - 1 min
Test voltage between terminals	U T1		1200	VDC	10 s
Operating temperature			- 55 / + 105	$^{\circ}\text{C}$	
Estimated operational life (-3%)			100'000	h	Un DC / 70 $^{\circ}\text{C}$
Dimension	Symbol			Unit	Conditions
Width	B max		45	mm	
Height	L max		51	mm	
Length	H max		36	mm	
Terminals					
Axial tinned wire	d		$\varnothing 1.2 \times 38$	mm	
	M1				
	M0				
	Modification	Date	Visa émetteur		

Condensateurs CH 1401 Yverdon-les-Bains
 Kondensatoren Tel.: ++41 24 445 66 88
 Capacitors Fax: ++41 24 445 66 89

Le Janché
Capacitors
A FISCHER & TALSCHER COMPANY

HJJ

22.12.2006

faisab5624.XLS