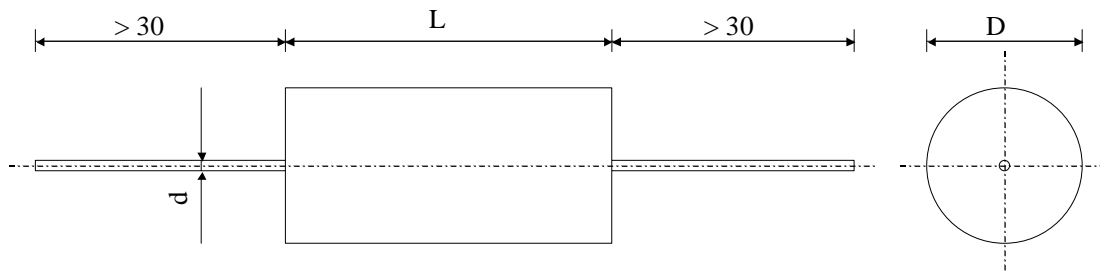


#5827

METALLIZED CAPACITORS

PPM 63-022 dsa K



Dielectric of metallized polypropylene

Polyester wrapped / Epoxy resin sealing

Parameter	Symbol		Value	Unit	Condition
Capacitance	C		0.22	$\mu\text{F}$	1 V / 1 kHz
Tolerance			$\pm 10$	%	
Rated voltage	Un DC		630	VDC	85°C
Rated voltage	Un AC		250	Veff	50 Hz / 85°C
slope of voltage variation	du/dt max.		150	V/ $\mu\text{sec}$	max. repetitive
RMS current	I RMS max.		1.25	Aeff	30 kHz / 70°C
Tangent delta	tg $\delta$		< 5	10 <sup>-4</sup>	1 V / 1 kHz
Tangent delta	tg $\delta$		< 8	10 <sup>-4</sup>	1 V / 10 kHz
Stray inductance	ESL		$\leq 50$	nH	
Insulation resistance	Ri		> 100'000	M $\Omega$	100 VDC - 1 min
Test voltage between terminals	U T1		1'008	VDC	10 s
Operating temp.			- 40 / + 85 °C		
Dimension	Symbol			Unit	Conditions
Diameter	D		12.5	mm	
Length	L		27	mm	
Terminals					
Axial tinned wire	d		0.8	mm	
	M1				
	M0				
	Modification	Date	Visa émetteur		

Condensateurs CH 1400 Yverdon-les-Bains  
 Kondensatoren Tel.: ++41 24 445 66 88  
 Capacitors Fax: ++41 24 445 66 89

**Le lanché**  
**Capacitors**  
A FISCHER & TALENCE COMPANY

HJJ

16.06.2009

faisab5827.XLS