

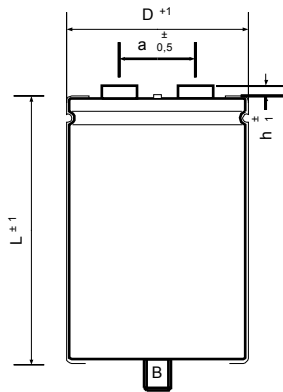
Leclanché Capacitors
48, av. de Grandson
1400 Yverdon, Switzerland



Tel. +41 24 445 66 88
Fax +41 24 445 66 89
capinfo@Lcap.ch
www.Lcap.ch

Drawing No. : 100011194
created from : hm 03/06/2013 16:16:00

Part Number : GMB40336090230



∅ D : 90 mm
L : 230 mm
a : 31,7 mm
h : 5 mm
B : M 12 x 16

Terminals :

Electrical Parameter

Rated Capacitance (C _R) @ 100 Hz / 20 °C	40.000 μF	
Tolerance	±20 %	
Rated Voltage (U _R)	360 V	
Surge Voltage (U _S) max. 5 x 1 min / h	396 V	
Reverse Voltage (U _U) max. 1 s	2 V	
Leakage Current (I _L) @ U _R / 5 min / 20 °C	26200 μA	
ESR typ. @ 100 Hz / 20°C	3,5 mΩ	
Tan δ typ. @ 100 Hz / 20°C	8 %	
Z max. @ 10 kHz / 20°C	3 mΩ	
ESL typ.	20 nH	
Rated Ripple Current (I _R) @ 100 Hz / 85 °C	25,8 A	
Useful life @ I _R , U _R , 85 °C	8000 h	
IEC Climatic category / Standards	40/085/56	IEC 60384-4
Applications	General Industrial	
Your article No. / Project		