

**argus**<sup>®</sup>  
thermal imaging from e2v

SAFETY AND  
INNOVATION

**argus**<sup>®</sup>  
thermal imaging from e2v

**NORTHERN EUROPE**  
SALES AND SERVICE CENTRE

Argus  
e2v, 106 Waterhouse Lane  
Chelmsford  
Essex, CM1 2QU  
England  
T +44 (0)1245 453429  
F +44 (0)1245 453396  
E-mail: argus.enquiries@e2v.com

**SOUTHERN EUROPE**

Argus  
e2v sas, 16 Burospace  
F-91 572 Bièvres  
Cedex  
France  
T +33 (0)1 6019 5500  
F +33 (0)1 6019 5529  
E-mail: argus.enquiries-fr@e2v.com

**AMERICAS**  
SALES AND SERVICE CENTRE

Argus  
e2v inc, 520 White Plains Road  
Suite 450  
Tarrytown  
NY 10591  
USA  
T: +1 (914) 592 6050 or 1-800-342-5338  
F: +1 (914) 592-5148  
E-mail: argus.enquiries-na@e2v.com

**ASIA PACIFIC**

Argus  
e2v, 11/F  
Onfem Tower  
29 Wyndham Street  
Central Hong Kong  
T +852 3679 364 8/9  
F +852 3583 1084  
E-mail: argus.enquiries-ap@e2v.com



For more information, or to request a trial of  
any of the argus thermal imaging cameras go to

**argusdirect.com**



**F/TYPE**  
SPECIALIST SEARCH

## F TYPE SPECIALIST SEARCH

PROTECT OFFICERS / CATCH CRIMINALS / PREVENT CRIME



### THE F TYPE IS A FULL-SPEC THERMAL IMAGING CAMERA, SPECIFICALLY DESIGNED FOR SPECIALIST SEARCH

Argus® is an e2v brand focused on designing and manufacturing the highest quality thermal imaging cameras on the market.

Argus thermal imaging technology is a cost-effective addition to your law enforcement team, enabling officers to observe a scene from a distance without revealing their location.



Argus Handheld Thermal Imaging Cameras (TICS) are essential in the fight against crime, especially at night or in zero visibility conditions. The Argus F Type can identify criminals that are camouflaged or hiding in shadows or bushes, otherwise invisible to the naked eye.

Argus cameras are designed and manufactured using European sourced components, allowing the cameras to be available to the wider export market, and are not subject to the USA ITAR controls (UK export applies).

### KEY APPLICATIONS

- Covert surveillance operations
- Buildings search
- Detect hidden compartments
- Detect hidden devices
- Detect residential cannabis factories

### KEY FEATURES

#### Void Finder Technology™

When selected, this clever automatic function helps the user to scan an area (e.g. walls or equipment inside of a room) looking for anything unusual (e.g. electronic equipment that may have been embedded, any voids within a wall or an area of a wall that may have been tampered with).

#### Enhanced Dynamic Scene Colourisation (EDSC)

Colourises the thermal image to allow the officers to pin-point the hottest areas within the scene.

#### Unparalleled image quality

High resolution detectors and high definition LCD screen, plus a great deal of engineering know-how provides you with very sharp, very clear images.

#### Image Compare Technology

This mode allows the user to compare scenes in real time. For example, a house being investigated as a suspected drug factory can be viewed with the camera, and compare to a neighbouring house using the same range setting. If the image becomes darker it implies that the first (suspected) house is much hotter, contributing to evidence that the house could be a residential drug factory.

#### SceneSave™

The F Type can capture and store up to 100 images. Using the software provided, the captured images can be downloaded to a suitable laptop/PC and exported in various formats.

#### Direct Temperature Measurement (DTM)™

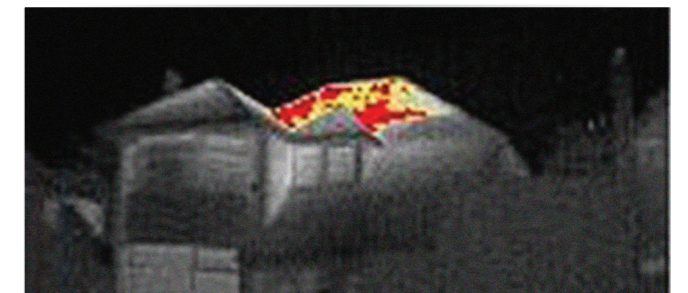
Displays the temperature of objects within a defined area of the thermal scene.

#### Tri-Mode Sensitivity

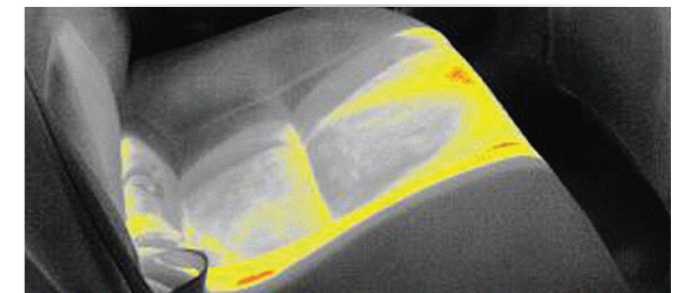
Allows temperature variations to be detected in scenes exceeding 1000°C, meaning a body can be located even in very high temperature surroundings.



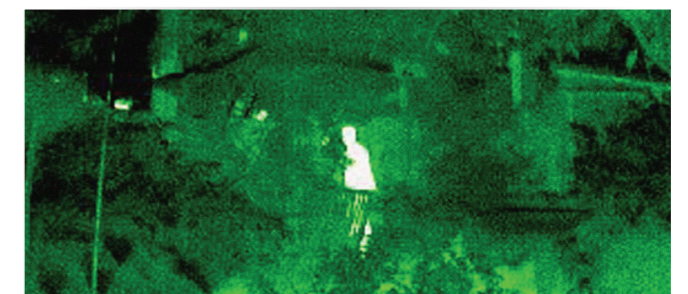
Detect hidden wall cavities



Thermal image of a residential street



Colour mode: Heat Marker Soft Red (Other options are available)



Hidden fugitive

The Argus F Type can be customised to suit the needs of your team, including upgrades and accessories to ensure you get the most from your thermal imaging camera.

To find out more, or to request a trial go to:

[ARGUSDIRECT.COM](http://ARGUSDIRECT.COM)