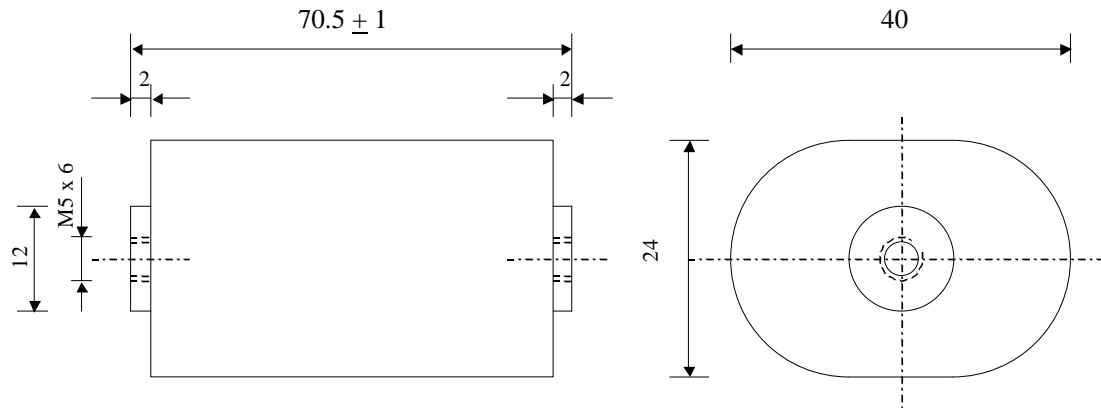


#5621

Power Electronics Capacitors

PPMF 50-5.0 dfv K



Dielectric of metallized polypropylene - Plastic sleeve

Epoxy resin end sealing - Threaded outputs

Parameter	Symbol		Value	Unit	Condition
Capacitance	C		5	μF	1 V / 1 kHz
Tolerance			± 10	%	
Rated voltage	Un DC		500	VDC	
Rated voltage	Un RMS		250	Veff	50 to 1000 Hz
RMS Current max	Ieff		10	A	10 kHz
slope of voltage variation	du/dt max.		100	V/ μsec	max. repetitive
Repetitive surge current	I cr. max		500	A	
Tangente delta	tg δ		8	10^{-4}	1 kHz
Stray inductance	ESL		≤ 15	nH	
Insulation resistance	Ri x C		$> 20'000$	s	300 VDC - 1 min
Test voltage between terminals	U T1		800	VDC	10 s
Climatic category (IEC68)			25/70/56		
Estimated operational life (-10%)			$> 10'000$	Pulses	500 V / 500 A
Dimension	Symbol			Unit	Conditions
Width	B max		40	mm	
Height	H max		24	mm	
Length	L		70.5 ± 1	mm	
Terminals					
Thread			M5 x 6	mm	
	D1		12	mm	
	M1				
	M0				
	Modification	Date	Visa émetteur		

Condensateurs CH 1401 Yverdon-les-Bains
 Kondensatoren Tel.: ++41 24 445 66 88
 Capacitors Fax: ++41 24 445 66 89

Le Janché
Capacitors
A FISCHER & FAUSCHER COMPANY

HJJ

14.12.2006

faisab5621.XLS