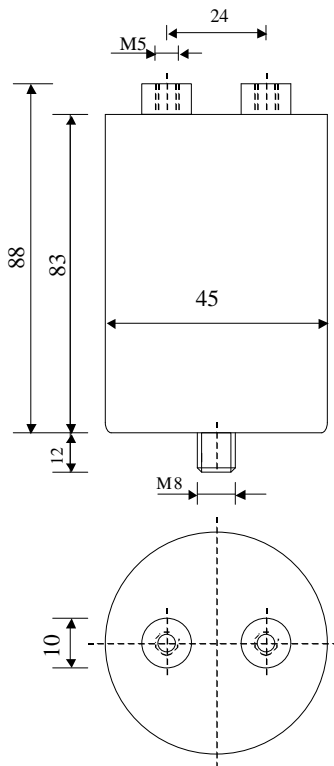


#9543

Discharge Capacitors

PPMF 200-4.0 cv6 K



Dielectric of metallized polypropylene

Threaded outputs

Resin end sealing

Aluminium case

Parameter	Symbol		Value	Unit	Condition
Capacitance	C		4	μF	1 V / 1 kHz
Tolerance			± 10	%	
Rated voltage	Un DC		2000	VDC	
Rated voltage	Un AC		660	Veff	50 Hz to 700 Hz
RMS Current	I _{eff}		20	Aeff	$f \geq 10000$ Hz
slope of voltage variation	du/dt max.		130	V/ μsec	max. repetitive
Repetitive surge current	I cr. max		520	A	
Tangent delta	tg δ		4	10^{-4}	1 V / 1 kHz
Equivalent series resistance	ESR		≤ 14	m Ω	10 kHz
Stray inductance	ESL		≤ 150	nH	
Insulation resistance between terminals	Ri		> 5000	M Ω	500 VDC - 1 min
Test voltage between terminals	U T1		3000	VDC	10 s
Test voltage terminals to case	U T2		3000	VAC	50 Hz / 1 min
Operating temp.			- 25 / + 70 °C		
Estimated operational life (-3%)			10×10^6	Pulses	2000 V / 520 A

Dimension	Symbol			Unit	Conditions
Diameter	$\varnothing D$		45	mm	
Height	H		83	mm	
Terminals					
Thread			M5 x 10	mm	
Thread spacing	e		24	mm	
Fixing stud			M8 x 12	mm	

M1

M0

Modification

Date

Visa émetteur

Condensateurs CH 1400 Yverdon-les-Bains
 Kondensatoren Tel.: ++41 24 445 66 88
 Capacitors Fax: ++41 24 445 66 89

Le Janché
Capacitors
A FISCHER & TAUERCHER COMPANY

HJJ

17.10.2007

PPMF9543.xls