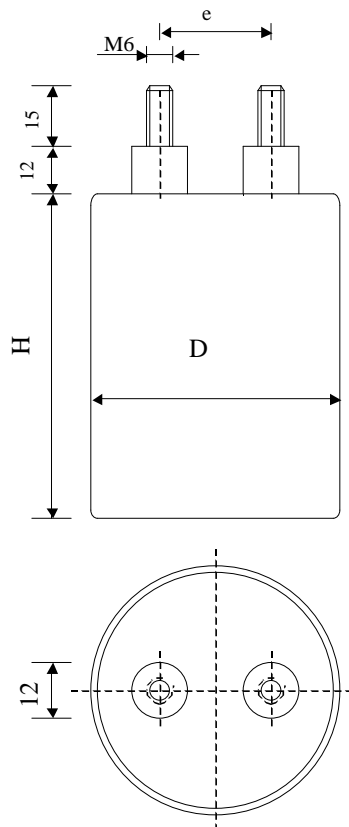


#6119

Discharge capacitors

PPMF 200-4.0 cs5 J



Dielectric of metallized polypropylene

Threaded outputs

Resin end sealing

Aluminium case

Parameter	Symbol	Value	Unit	Condition
Capacitance	C	4	μF	1 V / 1 kHz
Tolerance		± 10	%	
Rated voltage	Un DC	2000	VDC	
RMS Current permanent	I _{eff max.}	28	A _{eff}	10 kHz
Repetitive surge current	I _{cr. max}	3000	A	
Tangent delta	tgδ	≤ 4	10 ⁻⁴	1 V / 1 kHz
Equivalent serie resistance	ESR	< 5.0	mΩ	1 V / 10 kHz
Stray inductance	ESL	≤ 90	nH	
Insulation resistance	R _i x C	≥ 20'000	s	500 VDC - 1 min
Test voltage between terminals	U _{T1}	3000	VDC	10 s
Test voltage terminals to case	U _{T2}	3000	VAC	50 Hz / 1 min
Operating temp.		- 30 / + 70 °C		
Estimated operational life		> 10 Million	Pulses	2000 V / 3 kA
Repetition rate	F	< 16	Hz	
Dimension	Symbol		Unit	Conditions
Diameter	D	65	mm	
Height	H max	95	mm	
Terminals				
Thread		M6 x 15	mm	
Thread spacing	e	24 ± 0.5	mm	
	M1			
	M0			
Modification	Date	Visa émetteur		

Condensateurs CH 1400 Yverdon, Switzerland
 Kondensatoren Tel.: ++41 24 447 22 82
 Capacitors Fax: ++41 24 447 22 85

Leclanché
Capacitors
A FISCHER & TAUSSCH COMPANY

HJJ

www.Lcap.ch
 18.07.2012

capinfo@Lcap.ch
 faisab6119.XLS