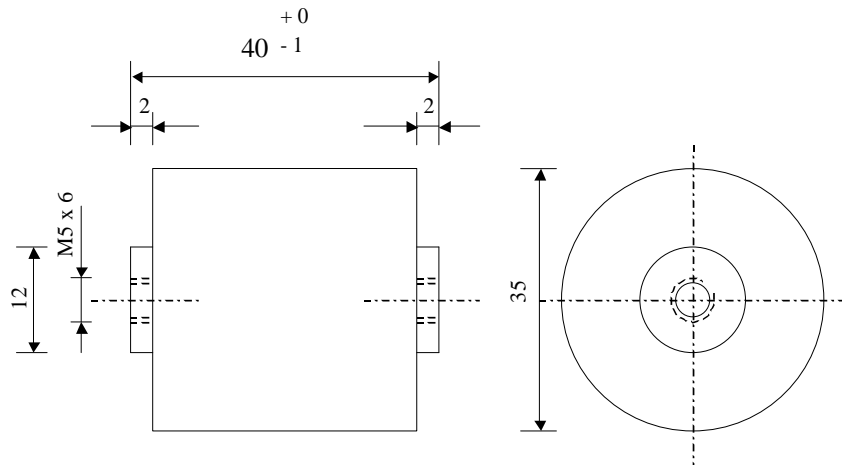


#5541

Power Electronics Capacitors

PPM 100-4.0 dv K



Dielectric of metallized polypropylene - Polyester wrapped

Epoxy resin end sealing - Threaded outputs

Parameter	Symbol		Value	Unit	Condition
Capacitance	C		4	μF	1 V / 1 kHz
Tolerance			± 10	%	
Rated voltage	Un DC		1000	VDC	
Rated voltage	Un RMS		300	Veff	50 Hz
RMS Current max	I _{eff}		10	A	10 to 100 kHz
Slope of voltage variation	du/dt max.		100	V/ μsec	max. repetitive
Repetitive surge current	I _{cr. max}		400	A	
Tangente delta dielectric	tg δ_o		2	10^{-4}	1 to 100 kHz
Serie resistance	RS		≤ 10	m Ω	
Stray inductance	ESL		≤ 15	nH	
Thermal resistance	R _{th}		15.5	$^{\circ}\text{C/W}$	Hot spot - terminals
Insulation resistance	R _i x C		$> 30'000$	s	500 VDC - 1 min
Test voltage between terminals	U _{T1}		2000	VDC	10 s
Climatic category (IEC68)			40/85/56		
Estimated operational life (-3%)			200'000	h	Un DC - 70 $^{\circ}\text{C}$

Dimension	Symbol		Value	Unit	Conditions
Diameter	$\varnothing D$		35	mm	
Height	H		36	mm	
Terminals					
Thread			M5 x 6	mm	
	D1		12	mm	
	M1				
	M0				
	Modification	Date	Visa émetteur		

Condensateurs CH 1401 Yverdon-les-Bains
 Kondensatoren Tel.: ++41 24 445 66 88
 Capacitors Fax: ++41 24 445 66 89

Le lanché
Capacitors
A FISCHER & TAUSSCHÉ COMPANY

HJJ

24.02.2005

faisab5541.XLS