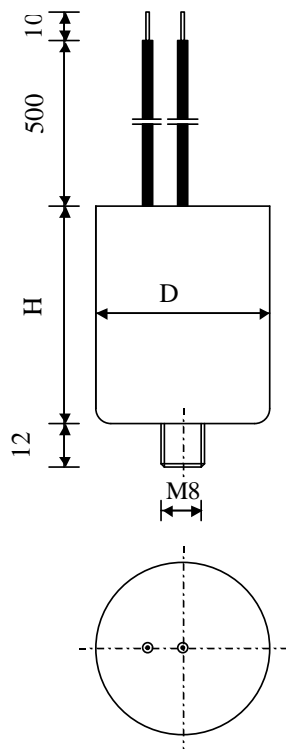


#5878

METALLIZED POLYPROPYLENE CAPACITORS

PPM 100-1.0 cv3 K



Dielectric of metallized polypropylene

Polyurethane resin end sealing

Aluminium case

Parameter	Symbol	Value	Unit	Condition
Capacitance	C	1	μF	1 V / 1 kHz
Tolerance		± 10	%	
Rated voltage	Un DC	1000	VDC	
Rated voltage	Un AC	480	VAC	50Hz to 400 Hz
RMS Current	I _{eff max.}	8.5	A _{eff}	10 kHz
slope of voltage variation	du/dt max.	400	V/ μsec	max. repetitive
Repetitive surge current	I cr. max	400	A	
Tangent delta	tg δ	≤ 5	10^{-4}	1 V / 1 kHz
Tangent delta	tg δ	≤ 15	10^{-4}	1 V / 10 kHz
Stray inductance	ESL	≤ 700	nH	
Insulation resistance	Ri	$> 20'000$	M Ω	100 VDC - 1 min
Test voltage between terminals	U T1	1800	VDC	10 s
Test voltage terminals to case	U T2	2500	VAC	50 Hz / 1 min
Climatic category		40/85/56		
Estimated operational life (-3%)		100'000	h	Un DC / 70°C

Dimension	Symbol	Value	Unit	Conditions
Diameter	D	40	mm	
Height	H	60	mm	
Terminals				
Cable	l	500	mm	
section	s	1.23	mm ²	
fixing stud		M8 x 12	mm	
	M1			
	M0			
	Modification	Date	Visa émetteur	

Condensateurs CH 1400 Yverdon-les-Bains
 Kondensatoren Tel.: ++41 24 445 66 88
 Capacitors Fax: ++41 24 445 66 89

Le Janché
Capacitors
A FISCHER & WASSER COMPANY

HJJ

09.11.2009

faisab5878.XLS