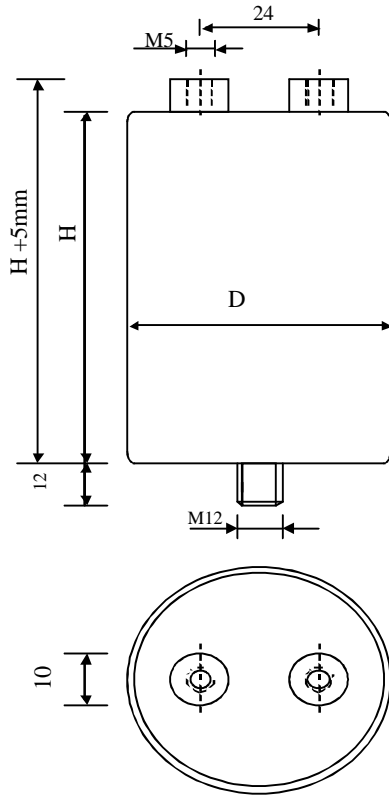


**METALLIZED POLYPROPYLENE CAPACITORS**

**PAM 66-20 cv6 (K)**



Dielectric of metallized polypropylene

Threaded outputs

Resin end sealing

Aluminium case

Parameter	Symbol	Value	Unit	Condition
Capacitance	C	20	µF	1 V / 1 kHz
Tolerance		± 10	%	
Rated voltage	Un AC	660	VAC	50Hz
RMS Current	I <sub>eff max.</sub>	50	A <sub>eff</sub>	1 to 10 kHz
Slope of voltage variation	du/dt max.		V/µs	max. repetitive
Repetitive surge current	I <sub>cr. max</sub>		A	
Tangente delta	tgδ	< 6	10 <sup>-6</sup>	1 V / 1 kHz
Equivalent serie resistance	ESR	< 3.9	mΩ	1 V / 10 kHz
Stray inductance	ESL		nH	
Insulation resistance	Ri x C		s	300 VDC - 1 min
Test voltage between terminals	U T1	1800	VDC	10 s
Test voltage terminals to case	U T2	3000	VAC	50 Hz / 1 min
Climatic category				
Estimated operational life (-3%)		30k	h	600VAC, 50Hz, 33Arms, 70°C

Dimension	Symbol	Value	Unit	Condition
Diameter	D	65	mm	
Height	H	145	mm	
Terminals				
Thread		M5x8	mm	
Thread spacing	e	24	mm	
Fixing stud		M12 x 12	mm	

	M1			
	M0			
	Modification	Date	Visa émetteur	

Condensateurs CH 1400, Yverdon, Switzerland  
 Kondensatoren Tel.: ++41 24 445 66 88  
 Capacitors Fax: ++41 24 445 66 89



FS 13.11.2013

[www.Lcap.ch](http://www.Lcap.ch)  
[capinfo@Lcap.ch](mailto:capinfo@Lcap.ch)