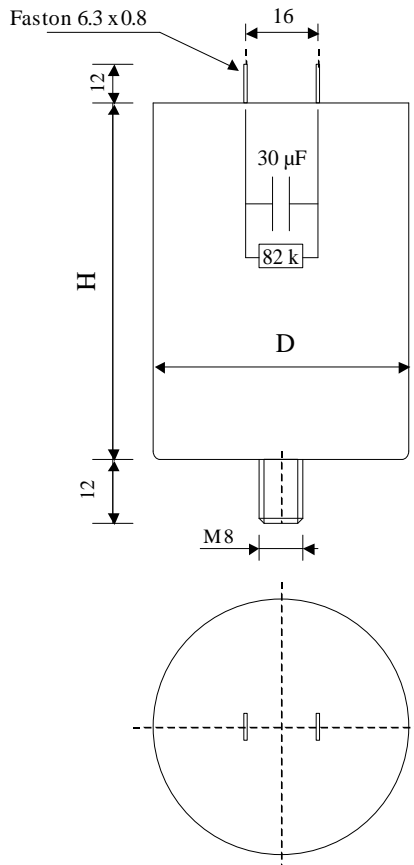


#6055

METALLIZED POLYPROPYLENE CAPACITORS

PAM 33-30.0 cvs2 K



Dielectric of metallized polypropylene

FAST-ON 6.3 x 0.8 mm

Epoxy resin end sealing

Aluminium case

| Parameter | Symbol | Value | Unit | Condition |
|--------------------------------|-------------|----------------|--------------------|-----------------|
| Capacitance | C | 30 | μF | 1 V / 1 kHz |
| Tolerance | | ± 10 | % | |
| Rated voltage | Un AC | 330 | VAC | 50Hz to 60 Hz |
| Parallel resistor | RP | 82 | $\text{k}\Omega$ | 1 V / 1 kHz |
| slope of voltage variation | du/dt max. | 18 | V/ μsec | max. repetitive |
| Repetitive surge current | I cr. max | 540 | A | |
| Tangent delta | tg δ | ≤ 6 | 10^{-4} | 1 V / 100 Hz |
| Equivalent serie resistance | ESR | 15 | $\text{m}\Omega$ | 1 V / 10 kHz |
| Stray inductance | ESL | ≤ 100 | nH | |
| Test voltage between terminals | U T1 | 390 | VAC | 50 Hz / 10 s |
| Test voltage terminals to case | U T2 | 2500 | VAC | 50 Hz / 1 min |
| Operating Temperature | | -40 to + ξ | $^{\circ}\text{C}$ | |

| Dimension | Symbol | Value | Unit | Conditions |
|-------------|--------------|-----------|---------------|------------|
| Diameter | D | 40 | mm | |
| Height | H | 96 | mm | |
| Terminals | | | | |
| fast-on | | 6.3 x 0.8 | mm | |
| fixing stud | | M8 x 12 | mm | |
| | | | | |
| | M1 | | | |
| | M0 | | | |
| | Modification | Date | Visa émetteur | |

Condensateurs CH 1400 Yverdon, Switzerland
 Kondensatoren Tel.: ++41 24 445 66 88
 Capacitors Fax: ++41 24 445 66 89

Lecaniché
Capacitors
A FISCHER & TALSCHER COMPANY

HJJ

www.Lcap.ch
 27.10.2011

capinfo@Lcap.ch
 faisab6055.XLS