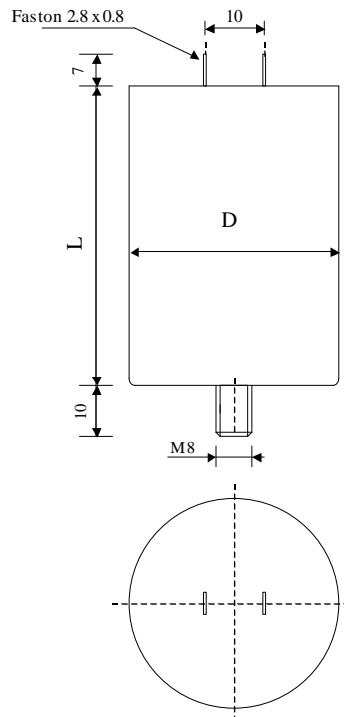


#6163

METALLIZED POLYPROPYLENE CAPACITORS

PAM 26-1.5 cv2 K



Dielectric of metallized polypropylene

FAST-ON 2.8 x 0.8 mm

Epoxy resin end sealing

Aluminium case

Parameter	Symbol	Value	Unit	Condition
Capacitance	C	1.5	$\mu\text{F}$	1 V / 1 kHz
Tolerance		$\pm 10$	%	
Rated voltage	Un AC	260	VAC	50Hz to 100 Hz
slope of voltage variation	du/dt max.	55	V/ $\mu\text{sec}$	max. repetitive
Repetitive surge current	I cr. max	82.5	A	
Tangent delta	tg $\delta$	$\leq 5$	$10^{-4}$	1 V / 1 kHz
Stray inductance	ESL	$\leq 70$	nH	
Insulation resistance	Ri	$> 7000$	M $\Omega$	300 VDC - 1 min
Test voltage between terminals	U T1	900	VDC	10 s
Test voltage terminals to case	U T2	2500	VAC	50 Hz / 1 min
Operating Temperature		-25 to + $\xi$	$^{\circ}\text{C}$	
Dimension	Symbol		Unit	Conditions
Diameter	D	25	mm	
Height	H	42	mm	
Terminals				
fast-on		2.8 x 0.8	mm	
fixing stud		M8 x 10	mm	
	M1			
	M0			
	Modification	Date	Visa émetteur	

Condensateurs CH 1400 Yverdon, Switzerland  
 Kondensatoren Tel.: ++41 24 445 66 88  
 Capacitors Fax: ++41 24 445 66 89

**Leclanché**  
**Capacitors**  
A FISCHER & TALSCHER COMPANY

HJJ

www.Lcap.ch  
 15.02.2013

capinfo@Lcap.ch  
 faisab6163.XLS