

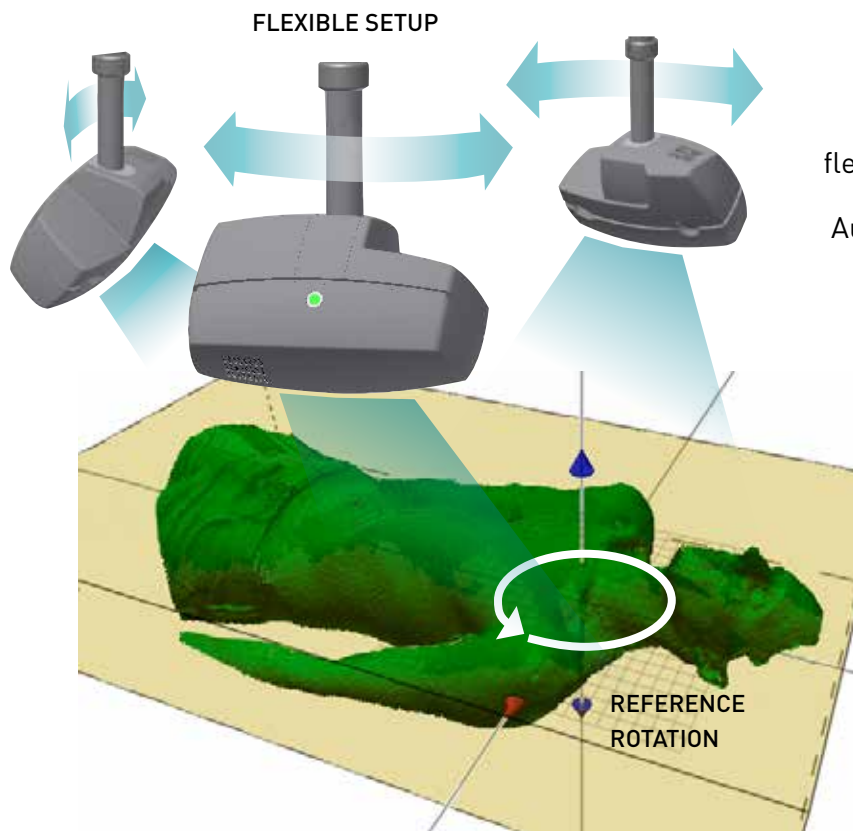


catalyst JPT

The Superior Solution for Patient Tracking
in Proton and Particle Therapy



Catalyst™ for the Most Demanding Clinical Applications...



Multiple cameras for full patient coverage

Adjustable setup for maximum flexibility and optimal patient view

Automatic reference adjustments according to couch rotations

Neutron shielding, ensuring maximum expected uptime

... with full Functionality for Motion Management



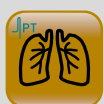
PATIENT SETUP AND POSITIONING

Posture errors projected directly on to the patient's skin ensures maximum accuracy of patient setup and positioning.



MOTION DETECTION

With intra-fraction motion detection the positioning accuracy is maintained throughout the treatment.



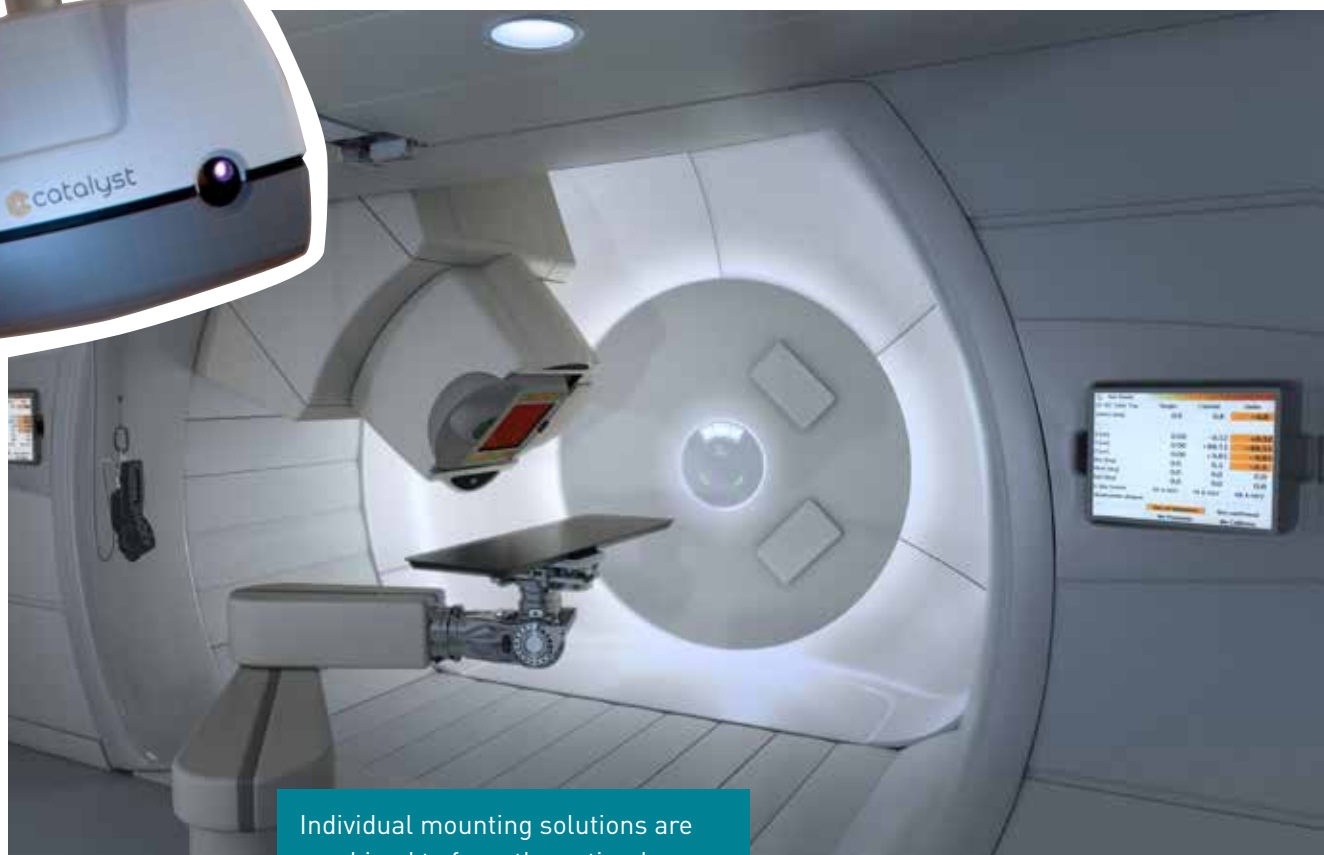
RESPIRATORY GATING

Using the Markerless Gating solution with audio and visual coaching secures the most reproducible outcome and guaranties maximum patient safety.

CLINICAL BENEFITS

- ➔ The pre alignment helps to correct for posture errors so that time and effort for KV-imaging are reduced
- ➔ By monitoring the patients motions in 3D ensures that the high accuracy of the initial position is maintained. Therefore the treatment beam is accurately delivered to its target.
- ➔ The intuitive aid for the patient, when given gated treatments, increases accuracy when delivering dosage to moving targets.

The Superior Solution, Fully Adapted to its Environment



Individual mounting solutions are combined to form the optimal configuration for each specific room geometry.

Photo courtesy of IBA

Features

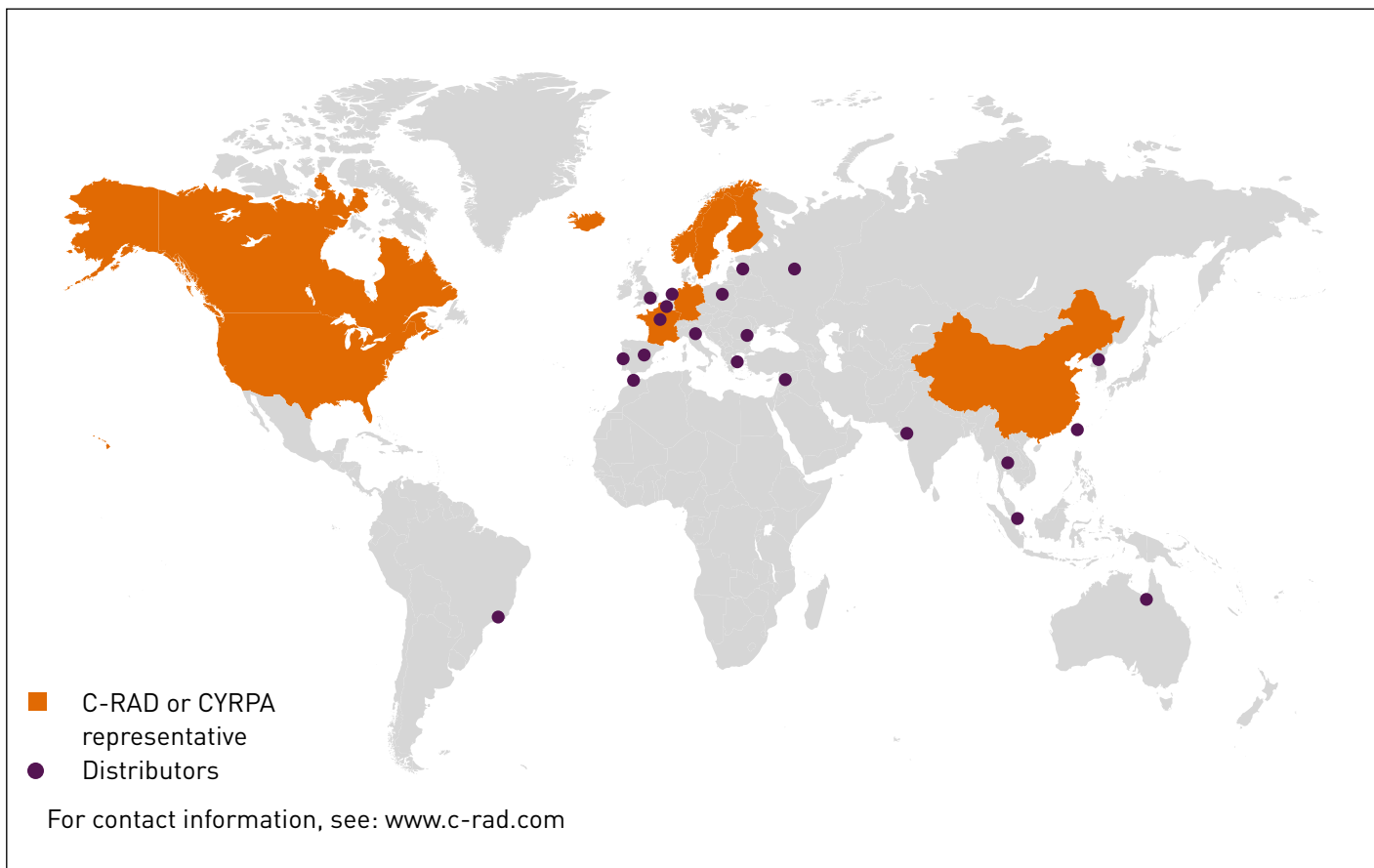
INTUITIVE USER INTERFACE: The Catalyst™ PT user interface focuses on simplicity and ensures maximum patient throughput.

AUDIO VISUAL COACHING: The patient can participate in ensuring the most reproducible outcome. Using simple visualization ensures a maximum of patient compliance.

INTEGRATED CUSTOMIZED SOLUTIONS: Couch tracking and advanced registration algorithms ensure uninterrupted patient monitoring during non-coplanar treatments.



Wherever you are, we are close by.
 With our global presence we are serving most of our customers directly.



C-RAD Positioning AB
 Bredgränd 18,
 SE-753 20 Uppsala, Sweden
 Telephone: +46 18 666930
 Fax: +46 18 126930
www.c-rad.com

C-RAD Inc.
 70 SE 4th Ave
 Delray Beach, FL 33483, USA
 Telephone: +1 561 742 9260
 Fax: +1 561 742 9259
www.c-rad.com

C-RAD GmbH
 Wittstr. 30 K
 13509 Berlin, Germany
 Telephone: +49 30 609847560
 Fax: +49 30 609847569
www.c-rad.com

C-RAD
 Suite 3501 B, SOHO The Exchange,
 No 1486 Nanjing W Rd,
 [299 Tong Ren Rd] Shanghai, PRC, 200040
 Phone: +86-21-61717290
 Fax: +86-21-61717218
www.c-rad.com



www.c-rad.com/support
support@c-rad.com

C-RAD Positioning AB reserves the right to change this document at any time without notice and disclaims liability for editorial, pictorial or typographical errors.