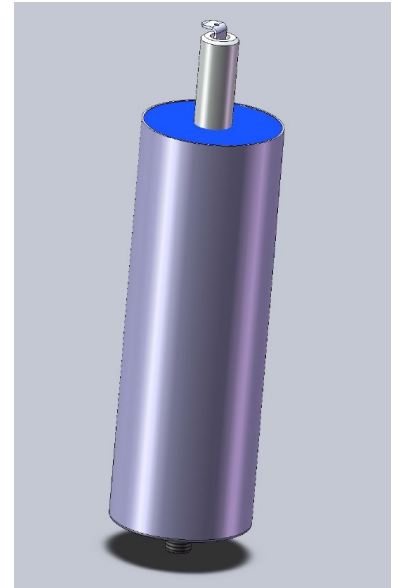
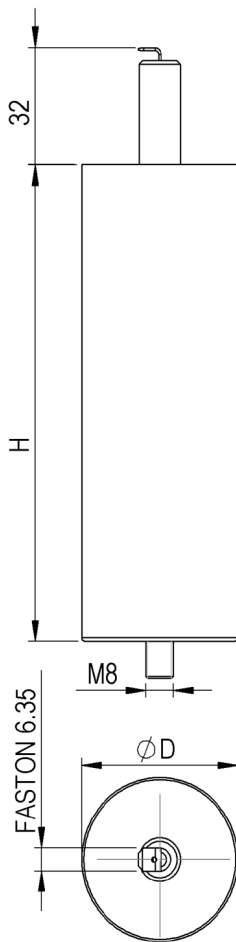


#6429

METALLIZED POLYPROPYLENE CAPACITORS

PAM 150-1.0 cv4 K



Dielectric of metallized polypropylene

FAST-ON 6.3 x 0.8 mm

Resin end sealing

Aluminium case

Parameter	Symbol	Value	Unit	Condition
Capacitance	C	1	$\mu\text{F}$	1 V / 1 kHz
Tolerance		$\pm 10$	%	
RMS voltage	U RMS	1500	V RMS	50 Hz to 800 Hz
Rated voltage	U <sub>r</sub>	2100	VAC	
repetitive surge current	I cr. max	1600	A	
RMS current	I RMS	18	A	10 kHz
Tangent delta	tg $\delta$	$\leq 5$	$10^{-4}$	1 V / 1 kHz
Equivalent serie resistance	ESR	$\leq 9.5$	m $\Omega$	10 kHz
Stray inductance	ESL	$\leq 100$	nH	
insulation resistance between terminals	R <sub>i</sub>	$\geq 20\,000$	M $\Omega$	500 V / 1 min
Test voltage between terminals	U T	2600	VAC	50 Hz / 10 sec.
Ambiant temperature		- 20 ... + 80	$^{\circ}\text{C}$	

Dimension	Symbol	Value	Unit	Conditions
Diameter	D	45	mm	
Height	H	131	mm	
Terminals				
Fast-on		6.3 x 0.8	mm	
fixing stud		M8	mm	

	M1			
	M0			
	Modification	Date	Visa émetteur	

Condensateurs CH 1400 Yverdon, Switzerland  
 Kondensatoren Tel.: ++41 24 445 66 88  
 Capacitors Fax: ++41 24 445 66 89

**Ledanché**  
**Capacitors**  
A FISCHER & TAUSSCHE COMPANY

HJJ

www.Lcap.ch  
 13.08.2015

capinfo@Lcap.ch  
 faisab6429.XLS