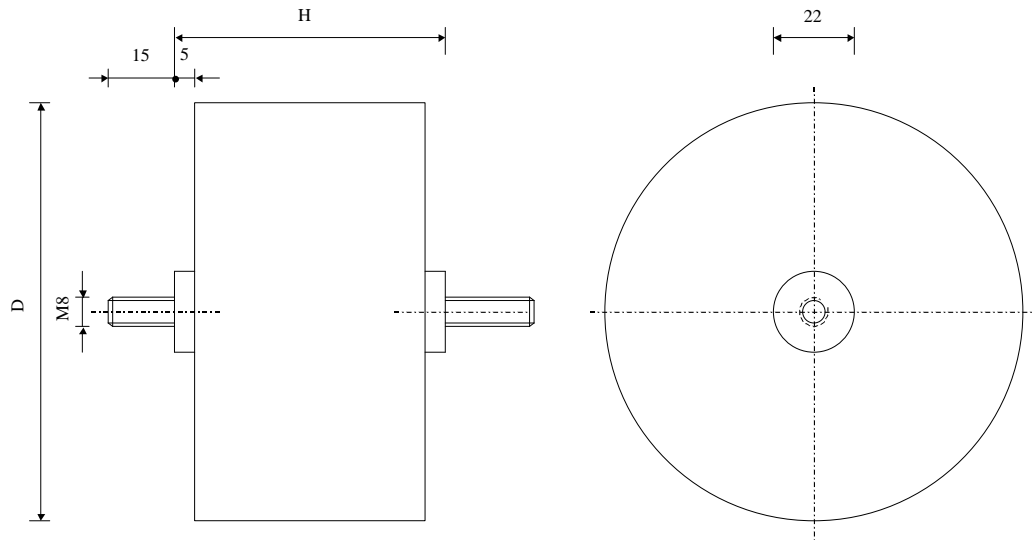


#5674

Power capacitors

PPM 40-150.0 uv K



Dielectric of metallized polypropylene - Plastic tube

Polyurethane resin end sealing - Threaded outputs

Parameter	Symbol		Value	Unit	Condition
Capacitance	C		150	μF	1 V / 1 kHz
Tolerance			± 10	%	
Rated voltage	U_n DC		400	VDC	
U_{eff}	U_{RMS}		150	V	RMS
Surge voltage	U_s		600	V	
RMS Current max	I_{eff}		90	A	3 kHz to 20 kHz
Tangent delta dielectric	$\text{tg}\delta_o$		2	10^{-4}	
Serie resistance	RS		≤ 0.45	$\text{m}\Omega$	
Stray inductance	ESL		≤ 15	nH	
Insulation resistance	$R_i \times C$		$> 20'000$	s	100 VDC - 1 min
Test voltage between terminals	U_{T1}		600	VDC	60 s
Climatic category (IEC68)			25/70/56		
Dimension	Symbol			Unit	Conditions
Diameter max.	$\varnothing D$		92	mm	
Height	H		50 ± 0.7 mm	mm	
Terminals					
Thread			M8 x 15	mm	
	M1				
	M0				
	Modification	Date	Visa émetteur		

Condensateurs CH 1400 Yverdon-les-Bains
 Kondensatoren Tel.: ++41 24 445 66 88
 Capacitors Fax: ++41 24 445 66 89

Le Janché
Capacitors
A FISCHER & TAUSSCH COMPANY

HJJ

20.06.2007

faisab5674.XLS