

Leclanché Capacitors
48, av. de Grandson
1400 Yverdon, Switzerland

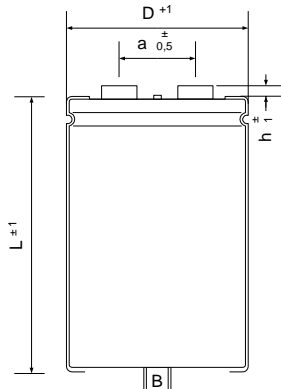


Tel. +41 24 445 66 88
Fax +41 24 445 66 89
capinfo@Lcap.ch
www.Lcap.ch

Drawing No. :1023926-53567
created from : 29/08/2012 17:15:00

Typ : GMB20346090200

RoHS Compliant



∅ D : 90 mm
L : 200 mm
a : 31,7 mm
h : 5 mm
B : M 12 x 16
Terminals : M6

Electrical Parameters

Rated Capacitance (C _R) @ 100 Hz / 20 °C	20000 μF	
Tolerance	±20 %	
Rated Voltage (U _R)	460 V	
Surge Voltage (U _S) max. 5 x 1 min / h	506 V	
Reverse Voltage (U _U) max. 1 s	2 V	
Leakage Current (I _L) @ U _R / 5 min / 20 °C	54000 μA	
ESR typ. @ 100 Hz / 20°C	7 mΩ	
Tan δ typ. @ 100 Hz / 20°C	9 %	
Z max. @ 10 kHz / 20°C	6 mΩ	
ESL typ.	20 nH	
Rated Ripple Current (I _R) @ 100 Hz / 85 °C	23 A	
Useful life @ I _R , U _R , 85 °C	8000 h	
IEC Climatic category / Standards	40/85/56	IEC 60384-4
Applications	general industrial	
Your article No.. / Project		