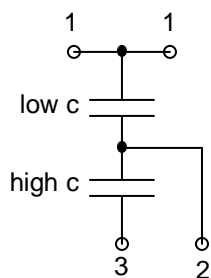


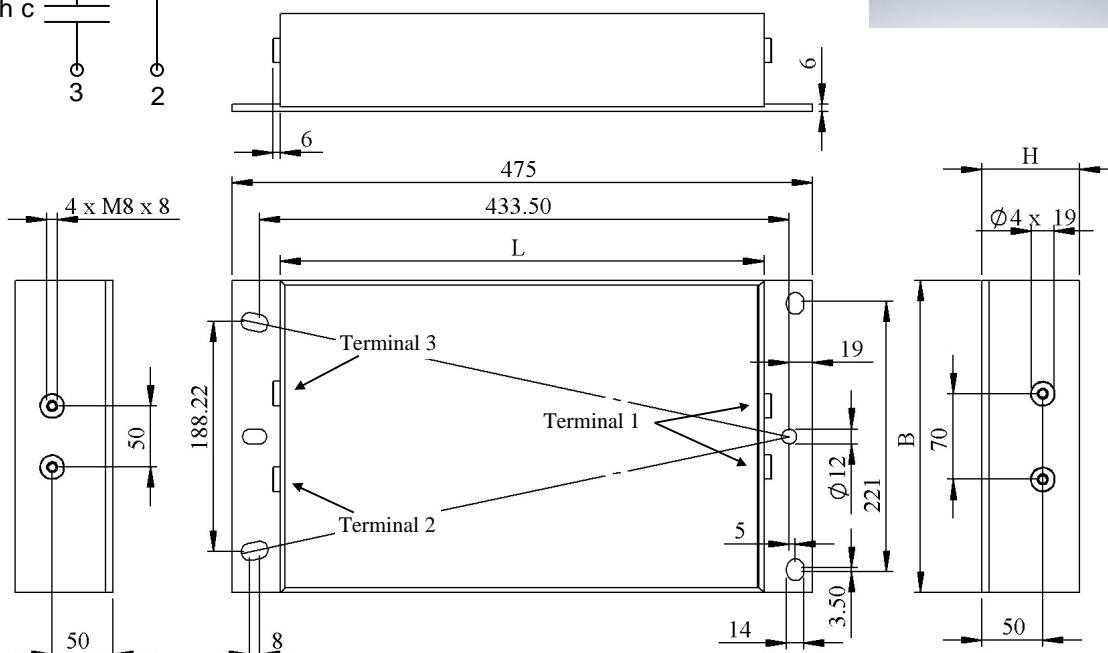
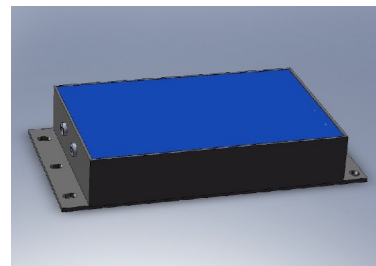
#6193

Discharge capacitors

PPMF 6500-0125 ru K



low c 141 nF / 57.78 kV
high c 1125 nF / 7.22 kV



Dielectric polypropylene metallized

Plastic case

polyurethan resin filled

Parameter	Symbol	Value	Unit	Condition
Capacitance	C	0.125	μF	1 V / 1 kHz
Tolerance		± 10	%	
Maximum voltage	U max.	65	k VDC	
Maximum ΔU voltage	ΔU max.	5	kVDC	
Repetitive discharge current	I cr. max	165	A	
Fault Current	I f	400	A	
RMS Current	I _{eff}	8	A _{eff}	
Tangent delta	tg δ	≤ 5	10^{-4}	1 V / 1 kHz
Tangent delta	tg δ	≤ 6	10^{-4}	1 V / 10 kHz
Stray inductance	ESL	≤ 400	nH	
Test voltage between terminals 1 to 3	U T	78	kVDC	1 min
Maximal repetition rate	F	1000	pps	
Operating Temperature		-20 to + ∞	$^{\circ}\text{C}$	
Dimension	Symbol	Value	Unit	Conditions
Width	B	255 \pm 1.5	mm	
Length	L	396 \pm 1.5	mm	
Height	H	80 \pm 1.5	mm	
	M1			
	M0			
	Modification	Date	Visa émetteur	

Condensateurs CH 1400 Yverdon, Switzerland
Kondensatoren Tel.: ++41 24 445 66 88
Capacitors Fax: ++41 24 445 66 89

Leclanché
Capacitors
A FISCHER & TAUSSCH COMPANY

HJJ

www.Lcap.ch
07.06.2013

capinfo@Lcap.ch
faisab6193.XLS