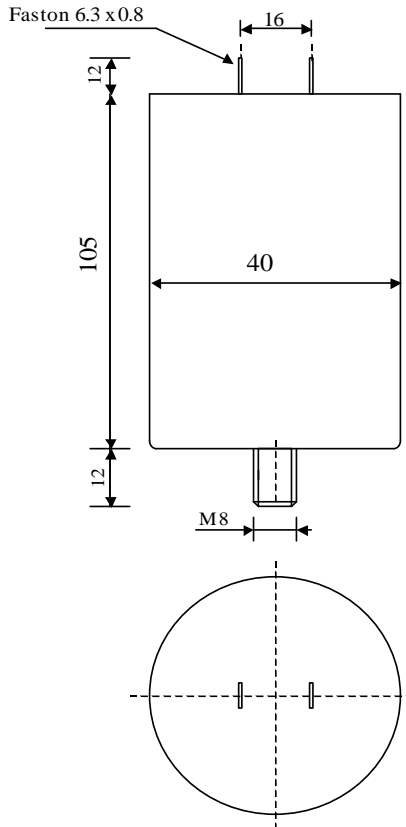


#5395

Metallized polypropylene capacitors

PPM 300-050 cv2 K



Dielectric of metallized polypropylene

FAST-ON 6.3 x 0.8 mm

Epoxy resin end sealing

Aluminium case

Parameter	Symbol	Value	Unit	Condition
Capacitance	C	0.5	μF	1 V / 1 kHz
Tolerance		± 10	%	
Rated voltage	Un DC	3000	VDC	
Rated voltage	Un AC	1500	Veff	50 - 2715 Hz
RMS Current	Ieff	12.8	Aeff	$f \geq 2715$ Hz
slope of voltage variation	du/dt max.	820	V/ μsec	max. repetitive
Repetitive surge current	I cr. max	410	A	
Power loss factor	tg δ	3	10^{-4}	1 V / 1 kHz
Equivalent series resistance	ESR	≤ 14.4	m Ω	10 kHz
Stray inductance	ESL	200	nH	
Insulation resistance between terminals	Ri	$> 20'000$	M Ω	300 VDC - 1 min
Insulation resistance between terminals to case	Ri case	$> 2'000$	M Ω	500 VDC - 1 min
Test voltage between terminals	U T1	4800	VDC	10 s
Test voltage terminals to case	U T2	3000	VAC	50 Hz / 1 min
Operating temp.		- 25 / + 85 °C		
Estimated operational life (-3%)		150'000	h	Un DC - 70 °C

Dimension	Symbol	Value	Unit	Conditions
Diameter	$\varnothing D$	40	mm	
Height	H	105	mm	
Terminals				
fast-on		6.3 x 0.8	mm	
fixing stud		M8 x 12	mm	
	M1			
	M0			
	Modification	Date	Visa émetteur	

Condensateurs CH 1400 Yverdon, Switzerland
 Kondensatoren Tel.: +41 24 445 66 88
 Capacitors Fax: +41 24 445 6689

Le lanché
Capacitors
A FISCHER & TALSCHER COMPANY

289

capinfo@lcap.ch
 07.10.2003

faisab5395.XLS