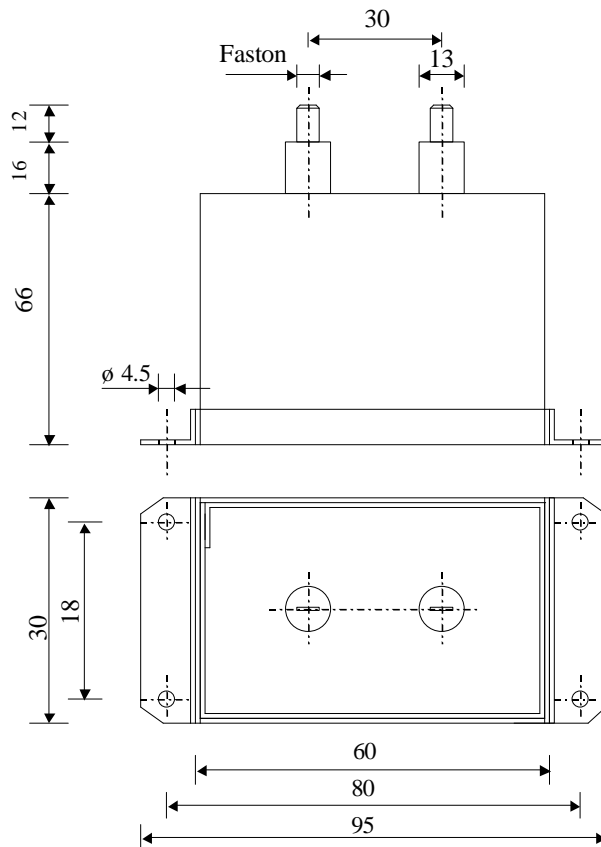


#5870

Metallized polypropylene capacitors

PPM 250-022 r K



Dielectric of metallized polypropylene

FASTON outputs

Resin end sealing

Aluminium case thick 1.2 mm

Parameter	Symbol	Value	Unit	Condition
Capacitance	C	0.22	μF	1 V / 1 kHz
Tolerance		± 10	%	
Rated voltage	Un DC	2'500	VDC	
Rated voltage	Un AC	850	Veff	50 / 60 Hz
RMS Current	Ieff max	5	Aeff	10 kHz
slope of voltage variation	du/dt max.	300	V/ μsec	max. repetitive
Repetitive surge current	I cr. max	66	A	
Tangent delta	tg δ	5	10^{-4}	1 V / 1 kHz
Stray inductance	ESL	≤ 100	nH	
Insulation resistance	Ri x C	$> 20'000$	s	500 VDC - 1 min
Test voltage between terminals	U T1	4'000	VDC	10 s
Test voltage between terminals to case	U T2	4'000	VAC	50 Hz / 1 min
Operating temp.		- 25 / + 85 °C		
Estimated operational life (-3%)		100'000	h	Un DC / 70°C
Dimension	Symbol		Unit	Conditions
Width	B	30	mm	
Length	L	60	mm	
Height	H	66	mm	
Terminals FASTON		6.3 x 0.8	mm	
Raster		30	mm	
	M1			
	M0			
	Modification	Date	Visa émetteur	

Condensateurs
Kondensatoren
CapacitorsCH 1400 Yverdon-les-Bains
Tel.: ++41 24 445 66 88
Fax: ++41 24 445 66 89

Le Lanché
Capacitors
A FISCHER & TANECHÉ COMPANY

HJJ

29.10.2009

faisab5870.XLS