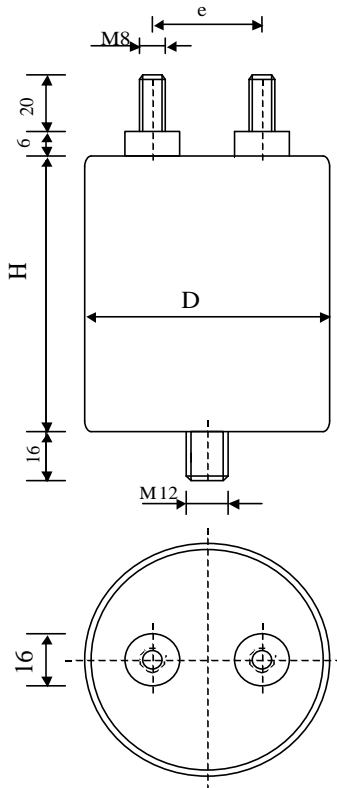


#5914

METALLIZED POLYPROPYLENE CAPACITORS

PPM 100-150.0 cv5 K



Dielectric of metallized polypropylene

Threaded outputs

Resin end sealing

Aluminium case

| Parameter | Symbol | | Value | Unit | Condition |
|-----------------------------------|-----------------------|--------------|---------------|------------------|-----------------|
| Capacitance | C | | 150 | μF | 1 V / 1 kHz |
| Tolerance | | | ± 10 | % | |
| Rated voltage | Un DC | | 1000 | VDC | |
| Maximum Voltage 2 s. | Um | | 1550 | V | every 20 min |
| Overvoltage 2 s. | U ϵ | | 1300 | V | every 5 min |
| RMS Current permanent | I _{eff max.} | | 33 | A _{eff} | |
| Repetitive surge current | I cr. max | | 1400 | A | |
| Tangent delta | tg δ | | ≤ 50 | 10^{-4} | 1 V / 1 kHz |
| Equivalent serie resistance | ESR | 25°C to 70°C | 5,5 | m Ω | 1 V / 10 kHz |
| Stray inductance | ESL | | ≤ 55 | nH | |
| Insulation resistance | Ri x C | | $\geq 30'000$ | s | 500 VDC - 1 min |
| Test voltage between terminals | U T1 | | 2000 | VDC | 10 s |
| Test voltage terminals to case | U T2 | | 3500 | VAC | 50 Hz / 1 min |
| Climatic category | | | 40/70/56 | | |
| Estimated operational life (-7 %) | | | > 200'000 | h | Un DC / 70°C |

| Dimension | Symbol | | Value | Unit | Conditions |
|----------------|--------------|------------|---------------|-----------------|------------|
| Diameter | D | | 85 | mm | |
| Height | H | | 101 | mm | |
| Terminals | | | | | |
| Thread | | | M8 x 20 | mm | |
| Thread spacing | e | | 32 | mm | |
| Fixing stud | | | M12 x 16 | mm | |
| Mass approx. | m | | | kg | |
| | M1 | | | | |
| | M0 | 13.04.2010 | FS | H porté à 101mm | |
| | Modification | Date | Visa émetteur | | |

Condensateurs CH 1400 Yverdon-les-Bains
 Kondensatoren Tel.: ++41 24 447 22 82
 Capacitors Fax: ++41 24 447 22 85

Le lanché
Capacitors
A FISCHER & PAUSCHKE COMPANY

HJJ

HJJ

07.04.2010

faisab5914.XLS