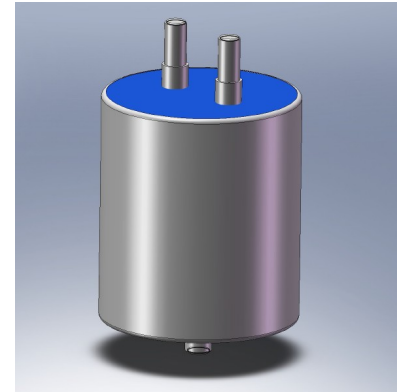
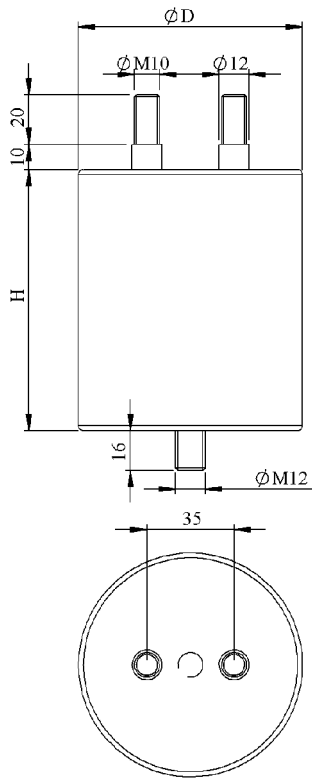


#6214

METALLIZED POLYPROPYLENE CAPACITORS

PAM 90-22.0 cv5 K



Dielectric of metallized polypropylene

Threaded outputs

Resin end sealing

Aluminium case

Parameter	Symbol	Value	Unit	Condition
Capacitance	C	22	µF	1 V / 1 kHz
Tolerance		± 10	%	
Rated voltage	Un AC	900	VAC	
RMS voltage	U RMS	640	VDC	
Surge voltage	Us	1500	V	
RMS Current permanent	I _{eff} max.	50	A _{eff}	10 kHz
Repetitive surge courant	I _{cr.} max	1700	A	
Not repetitive surge courant	I _s	4200	A	
Tangent delta	tgδ	≤ 6	10 ⁻⁴	1 V / 1 kHz
Equivalent serie resistance	ESR	2.2	mΩ	1 V / 10 kHz
Stray inductance	ESL	≤ 70	nH	
Insulation resistance	R _i x C	≥ 20'000	s	500 VDC - 1 min
Test voltage between terminals	U T1	1150	VAC	50 Hz / 10 s
Test voltage terminals to case	U T2	2600	VDC	50 Hz / 10 s
Operating temp.		- 25 / + 85 °C		

Dimension	Symbol	Value	Unit	Conditions
Diameter	D	90	mm	
Height	H max	105	mm	
Terminals				
Thread		M10 x 20	mm	
Thread spacing	e	35 ± 0.7	mm	
Fixing stud		M12 x 16	mm	

	M1			
	M0			
	Modification	Date	Visa émetteur	

Condensateurs CH 1400 Yverdon, Switzerland
 Kondensatoren Tel.: ++41 24 447 22 82
 Capacitors Fax: ++41 24 447 22 85

Leclanché
Capacitors
A FISCHER & TAUSSCH COMPANY

HJJ

www.Lcap.ch
 05.09.2013

capinfo@Lcap.ch
 faisab6214.XLS