



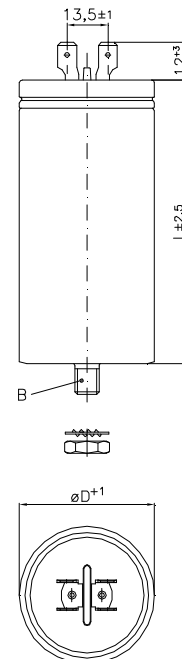
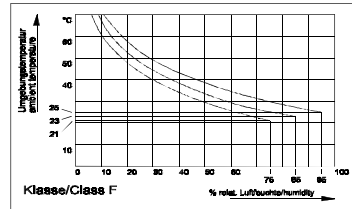


Applications	MKP - AC Capacitor for Lighting, Motors and General Use	
Code	PAM 28-100.0 cv2d (J)	
Reference Standards	ENEC / VDE DIN EN 61048 : 2006, DIN EN 61049 VDE 560 # 61 + 62 280 V~, 50/60 Hz	VDE IEC / DIN EN 60252-1 VDE 560-8 300 V~, 50/60 Hz GPFNT 10,000 h (B) 40/85/21 (IEC 68)
Approval marks	  	
	UL810 / UL840 	UL recognized component for USA and Canada 300V~, 50/60 Hz, -25 °C...+90 °C (≤50µF), AFC 10,000 A 300V~, 50/60 Hz, -25 °C...+85 °C (>50µF), AFC 10,000 A File E211978
Rated values		
Rated capacitance	100.0 µF	
Tolerance of capacitance	± 5 %	
Rated voltage	300 V~, 280 V~	
Rated frequency	50/60 Hz	
Temperature range	-40 °C to +100 °C, -40 °C to +85 °C (>50 µF)	
Application class	GPFNT / GMFNT	
Service life / (class)	10,000 h (B)	
Type	P2 (B)	
Test class	40/85/21 (IEC 68)	
Limit values of relative humidity	class F according DIN 40 040	
Condensation	not permitted	
Test voltage		
between terminals	(2.15 · U _N) V~	
between terminals and case	3,000 V~	
Construction		
Terminal	dual tab connectors - 6.3 x 0.8 mm - DIN 46 244	
Case	aluminium (DIN 41 116) (DIN 40 011)	
with base mounting stud	ø12.5 enclosed	
washer - DIN 6797	M 12 enclosed	
nut - based on ISO 4035	7 Nm	
max. fixing torque	break action mechanism	
Protection	none	
Discharge resistor	based on vegetable oil, non-PCB, viscous	
Filling material	optional	
Mounting position		
Dimensions		
Diameter	D = 60 mm	
Length	L = 124 mm	
Tab connector jut out	(12 + 3) mm	
over case		
Base mounting stud	B: M 12 x 16 mm	



Prolongation of case by up to 10 mm has to be considered for the event of overload (action of the overpressure mechanism and electrical disconnection).