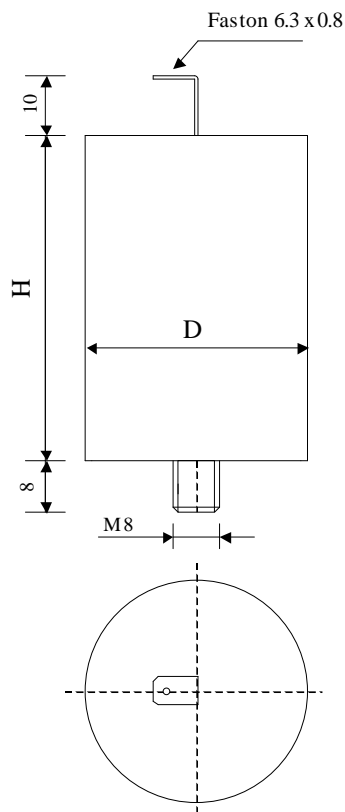


#5817

Power Electronics Capacitors

PAM 240-010 dv K



Dielectric:
metallized polypropylene

Plastic sleeve

Epoxy resin end sealing

Parameter	Symbol		Value	Unit	Condition
Capacitance	C		0.1	μF	1 V / 1 kHz
Tolerance			± 10	%	
Rated voltage	Un RMS		2400	V _{eff}	
Rated voltage	Un DC		3400	VDC	
Peak Voltage	Up		4300	V	
Surge Voltage	Us		5800	V	
RMS Current max	I _{eff}		6.9	A	10 kHz to 100 kHz
Repetitive peak current	I cr. max		200	A	
Surge Current	I s		450	A	
Tangente delta	tg δ		< 3	10^{-4}	50 Hz
Equivalent Serie resistance	ESR		≤ 48	m Ω	10 kHz
Stray inductance	ESL		≤ 200	nH	
Insulation resistance	Ri		> 50'000	M Ω	500 VDC - 1 min
Test voltage between terminals	U T1		5200	VAC	50 Hz / 2 sec.
Climatic category (IEC68)			40/85/56		
Estimated operational life (-3%)			100'000	h	Un DC - 70°C
Dimension	Symbol			Unit	Conditions
Diameter	D max.		31	mm	
Height	H max		143	mm	
Terminals					
Thread			M8 x 8	mm	
Faston			6.3 x 0.8	mm	
	M1				
	M0				
	Modification	Date	Visa émetteur		

Condensateurs CH 1401 Yverdon-les-Bains
Kondensatoren Tel.: ++41 24 445 66 88
Capacitors Fax: ++41 24 445 66 89

Le Janché
Capacitors
A FRODNER & PASCHKE COMPANY

HJJ

12.05.2009

faisab5817.XLS