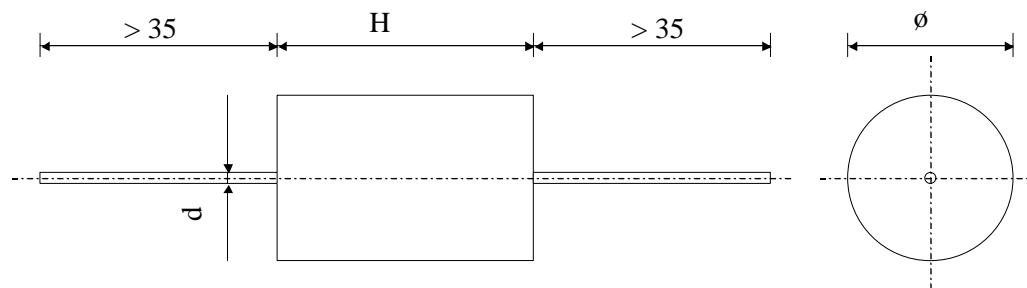


# 5602

## High Temperature Capacitors

TYPE  
KTS 100-247 d K

Polyester Film-foil

Polyester wrapped / Epoxy resin sealing

| Paramètre                      | Symbol           | Value           | Unit              | Condition           |
|--------------------------------|------------------|-----------------|-------------------|---------------------|
| Capacitance                    | C                | 4.7             | nF                | 20°C, 1 kHz         |
| Tolérance                      |                  | 10              | %                 |                     |
| Rated voltage                  | Un DC            | 1000            | VDC               |                     |
| Rated voltage                  | Un AC            | 200             | VAC               |                     |
| RMS Current                    | I <sub>eff</sub> | 125             | mA <sub>eff</sub> | 100 kHz             |
| slope of voltage variation     | du/dt max.       | 6000            | V/μsec            |                     |
| Tangente delta                 | tgδ              | ≤ 70 E-4        |                   | 1 V / 1 kHz / 25 °C |
| Stray inductance               | ESL              | ≤ 25            | nH                |                     |
| Insulation resistance          | Ri x C           | > 20'000        | s                 | 500 VDC - 1 min     |
| Test voltage between terminals | U T1             | 3'000           | VDC               | 1 min               |
| Operating temperature          |                  | - 55 / + 125 C° |                   |                     |
|                                |                  |                 |                   |                     |
|                                |                  |                 |                   |                     |

| Dimension         | Symbole | Value | Unité | Conditions |
|-------------------|---------|-------|-------|------------|
| Diameter          | Ø       | 11    | mm    |            |
| Height            | H       | 22    | mm    |            |
| Terminals         |         |       |       |            |
| Axial tinned wire |         | Ø 1.0 | mm    |            |
|                   |         |       |       |            |

|   |              |      |               |  |
|---|--------------|------|---------------|--|
| Valeurs indicatives, sous réserve de modification | M2           |      |               |  |
|   | M1           |      |               |  |
|   | M0           |      |               |  |
|   | Modification | Date | Visa émetteur |  |

Condensateurs CH 1401 Yverdon-les-Bains  
 Kondensatoren Tel.: ++41 24 445 66 88  
 Capacitors Fax: ++41 24 445 66 89

**Le lanché**  
**Capacitors**  
A FISCHER & TALSCHER COMPANY

HJJ

09.10.2006

faisab5602.XLS