

Applications

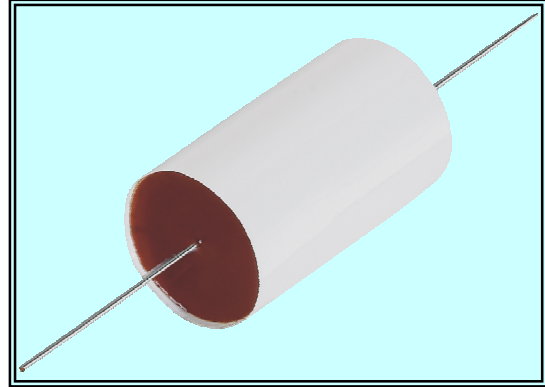
- High Voltage circuits
- Voltage dividers and multipliers

Main Characteristics

- Compact size / $U_t = 1.6 U_n$
- Dielectric of metallized polypropylene
- Light-weight / Self healing
- Low dielectric losses
- Low inductance ≤ 50 nH
- Capacitance measured at 1 kHz / 23 °C
- Lower Tolerances available on demand

Design

- Cylindrical winding Polyester wrapped
- Axial connections with tinned copper wires
- Epoxy resin end seal (UL94-VO)



1.0 Rated Values and Operational data

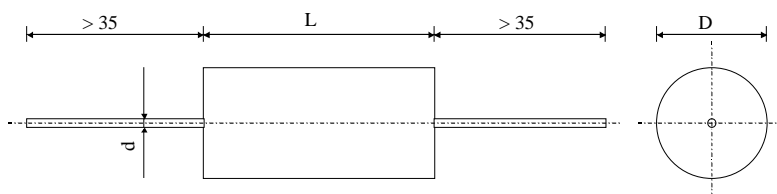
Nominal Voltage	U_N DC	2000	4000	6000	8000	10000
Nominal Voltage	U_N AC / 50 Hz	500	750	950	1200	1400
Test voltage between terminals 1 min	U_T VDC	3200	6400	9600	12800	16000
Slope of voltage variation	Du/dt max V/ μ s	90	275	775	2000	2650

Insulation resistance $C \leq 0.33 \mu$ F	500 V / 1 min / 23 °C	R_i [mOhms]	> 100'000
Time Constant $C > 0.33 \mu$ F	500 V / 1 min / 23 °C	$R_i \times C$ [s]	> 30'000

2.0 Capacitance

$C_n \Rightarrow$	3.3nF	4.7 nF	10 nF	33 nF	68 nF	100 nF	150 nF	220 nF	680 nF	3.3 μ F
2 kVDC										
4 kVDC										
6 kVDC										
8 kVDC										
10 kVDC										

3.0 Dimensions



D	≤ 12.5	> 12.5
d	0.8	1.0

Compact, High-Voltage, Metallized Polypropylene Power Capacitors

PPMHT

High Voltage Metallized Capacitors					2 kVDC
Type	C [nF]	D \varnothing [mm]	L [mm]	T $_{g\delta}$ 10kHz [x 10 ⁻⁴]	I $_{rms}$ 10 k [A]
PPMHT 200-015 d K	150	10.0	48.0	12.1	1.36
PPMHT 200-022 d K	220	11.8	48.0	12.1	1.79
PPMHT 200-033 d K	330	14.0	48.0	12.2	2.41
PPMHT200-047 d K	470	16.3	48.0	12.3	3.13
PPMHT 200-068 d K	680	19.3	48.0	12.5	4.12
PPMHT 200-1.0 d K	1000	23.0	48.0	12.8	5.49
PPMHT 200-1.5 d K	1500	27.8	48.0	13.2	7.43
PPMHT 200-2.2 d K	2200	33.4	48.0	13.8	9.87
PPMHT 200-3.3 d K	3300	40.5	48.0	14.7	13.27

High Voltage Metallized Capacitors					8 kVDC
Type	C [nF]	D \varnothing [mm]	L [mm]	T $_{g\delta}$ 10kHz [x 10 ⁻⁴]	I $_{eff}$ 10 k [A]
PPMHT 800-247 d K	4.7	9.9	48.0	2.6	0.35
PPMHT 800-268 d K	6.8	11.5	48.0	2.6	0.51
PPMHT 800-110 d K	10	13.6	48.0	2.6	0.75
PPMHT 800-115 d K	15	16.3	48.0	2.6	1.13
PPMHT 800-122 d K	22	19.3	48.0	2.6	1.61
PPMHT 800-133 d K	33	23.3	48.0	2.7	2.20
PPMHT 800-147 d K	47	27.5	48.0	2.7	2.90
PPMHT 800-168 d K	68	32.7	48.0	2.7	3.88
PPMHT 800-010 d K	100	39.3	48.0	2.7	5.27

High Voltage Metallized Capacitors					4 kVDC
Type	C [nF]	D \varnothing [mm]	L [mm]	T $_{g\delta}$ 10kHz [x 10 ⁻⁴]	I $_{rms}$ 10 k [A]
PPMHT 400-133 d K	33	10.2	48.0	6.3	0.89
PPMHT 400-147 d K	47	11.8	48.0	6.3	1.16
PPMHT 400-168 d K	68	13.8	48.0	6.3	1.52
PPMHT 400-010 d K	100	16.4	48.0	6.3	2.02
PPMHT 400-015 d K	150	19.7	48.0	6.4	2.75
PPMHT 400-022 d K	220	23.5	48.0	6.4	3.68
PPMHT 400-033 d K	330	28.4	48.0	6.5	5.03
PPMHT 400-047 d K	470	33.6	48.0	6.6	6.60
PPMHT 400-068 d K	680	40.0	48.0	6.8	8.79

High Voltage Metallized Capacitors					10 kVDC
Type	C [nF]	D \varnothing [mm]	L [mm]	T $_{g\delta}$ 10kHz [x 10 ⁻⁴]	I $_{eff}$ 10 k [A]
PPMHT 1000-233 d K	3.3	9.8	58.0	2.6	0.29
PPMHT 1000-247 d K	4.7	11.3	58.0	2.6	0.41
PPMHT 1000-268 d K	6.8	13.2	58.0	2.6	0.60
PPMHT 1000-110 d K	10	15.6	58.0	2.6	0.88
PPMHT 1000-115 d K	15	18.7	58.0	2.6	1.32
PPMHT 1000-122 d K	22	22.3	58.0	2.6	1.94
PPMHT 1000-133 d K	33	26.9	58.0	2.6	2.65
PPMHT 1000-147 d K	47	31.8	58.0	2.6	3.49
PPMHT 1000-168 d K	68	38.0	58.0	2.6	4.66

High Voltage Metallized Capacitors					6 kVDC
Type	C [nF]	D \varnothing [mm]	L [mm]	T $_{g\delta}$ 10kHz [x 10 ⁻⁴]	I $_{rms}$ 10 k [A]
PPMHT 600-110 d K	10	9.2	48.0	3.6	0.60
PPMHT 600-115 d K	15	10.8	48.0	3.6	0.82
PPMHT 600-122 d K	22	12.7	48.0	3.6	1.09
PPMHT 600-133 d K	33	15.1	48.0	3.6	1.47
PPMHT 600-147 d K	47	17.7	48.0	3.6	1.92
PPMHT 600-168 d K	68	21.0	48.0	3.6	2.55
PPMHT 600-010 d K	100	25.1	48.0	3.6	3.43
PPMHT 600-015 d K	150	30.3	48.0	3.7	4.70
PPMHT 600-022 d K	220	36.4	48.0	3.7	6.34

For values not shown, please contact the factory.
We can build to your specifications.

4.0 Operational limits

